



When you have to hit it

DEAD-ON

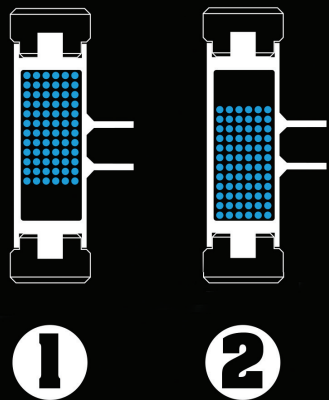
with one single, powerful swing,
full force, no rebound.
There's only one you can
rely upon: your SUPERCRAFT.
Go on - try it for yourself!



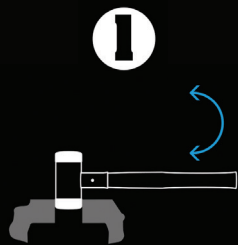
CarrLane[®]

MANUFACTURING CO.
www.carrlane.com

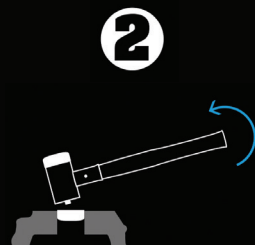
PACKED FULL OF POWER: THE SUPERCRAFT PRINCIPLE



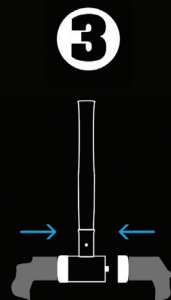
Non-rebound work
The head of the SUPERCRAFT mallet is filled with steel shot. This means that when the workpiece is impacted, the energy of the shot is transferred with a slight delay. The reduced rebound allows the impact energy to be absorbed, resulting in extremely powerful impact without vibration, which is much easier on your joints. Additionally, an advantage over steel mallets is the reduced noise level.



1
Firmly clamp the used insert in a vise and loosen with a lateral twisting movement.



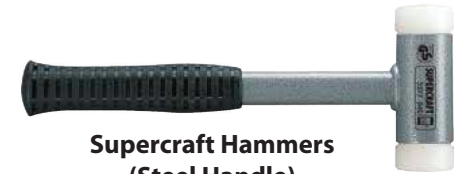
2
When the insert is loosened, pull the mallet upwards.



3
In the vise, press the new insert into the housing and insert retaining pins.

Break-proof steel tube handle and ergonomic, anti-slip grip

Completely robot-welded, robust powder coating, maximum solidity of the inserts made from special nylon with excellent impact quality and very high durability, inserts replaceable. The hammer's steel handle has an ergonomic rubber grip.



**Supercraft Hammers
(Steel Handle)**

Application: Positioning and joining of workpieces, assembly of sharp-edged workpieces, straightening work, housing assembly, plant construction, maintenance work, assembly and repair work in the automotive and truck sector, sheet-metal working.

Two options: Choose from the standard hammer, or also available with a high-visibility yellow fluorescent finish, ideal for locating your hammer in dim lighting conditions.



**HI-VIS
Supercraft Hammers
(Steel Handle)**

SUPERCRAFT HAMMERS — STEEL HANDLE

Part No.	Face Dia.	Weight (lbs)	Overall Length	Head Length	Replacement Inserts (2 Required)
CL-3377-030-NRH	30mm (1.18)	1.3	11.38	4.32	CL-3508-030-NRHI
CL-3377-040-NRH	40mm (1.57)	1.9	11.77	4.51	CL-3508-040-NRHI
CL-3377-050-NRH	50mm (1.96)	2.6	12.17	4.71	CL-3508-050-NRHI
CL-3377-060-NRH	60mm (2.36)	3.9	12.76	5.69	CL-3508-060-NRHI

HI-VIZ SUPERCRAFT HAMMERS — STEEL HANDLE

Part No.	Face Dia.	Weight (lbs)	Overall Length	Head Length	Replacement Inserts (2 Required)
CL-3377-130-NRH	30mm (1.18)	1.3	11.38	4.32	CL-3508-030-NRHI
CL-3377-140-NRH	40mm (1.57)	1.9	11.77	4.51	CL-3508-040-NRHI
CL-3377-150-NRH	50mm (1.96)	2.6	12.17	4.71	CL-3508-050-NRHI
CL-3377-160-NRH	60mm (2.36)	3.9	12.76	5.69	CL-3508-060-NRHI